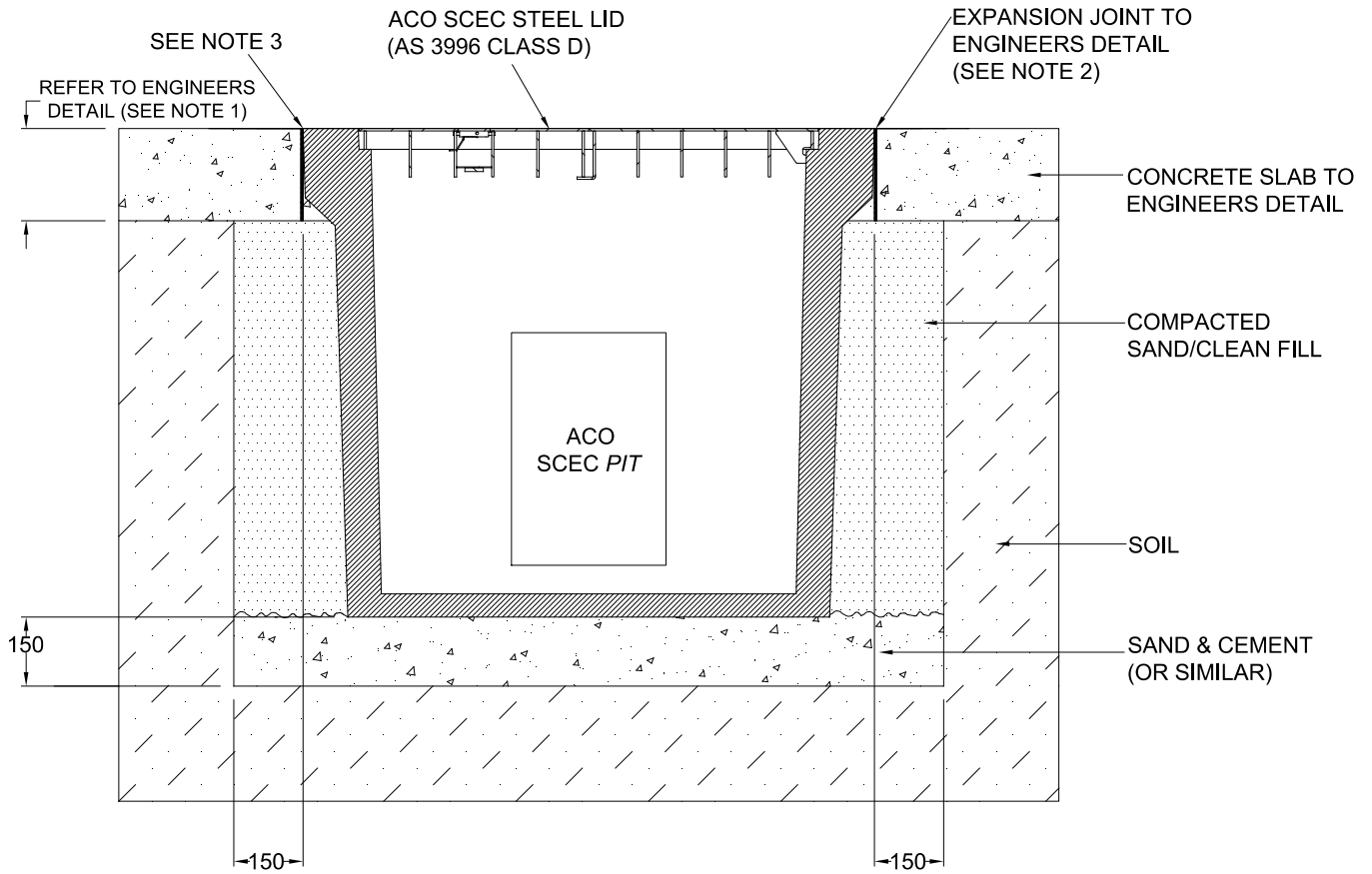


ACO CABLEMATE®	SCEC PIT INSTALLATION DRAWING	
DRWG# SCG-DC	With Steel Lid	
Concrete: For 8000kg Nominal Wheel Load		



NOTES:

1. Specific site conditions may require an increase in these dimensions or reinforcement. It is the customer's responsibility to ensure the installation drawing is detailed for the application and pit structure is protected from undue stress. *Engineering advice may be required.*
2. Expansion joints are recommended to protect the pit from movements in the concrete slab.
3. The finished level of the concrete slab must be flush with the top of the pit.
4. Refer to ACO's latest installation instructions for complete details.

ACO CABLEMATE®	SCEC PIT SPECIFICATION CLAUSE	ACO Pty Ltd Ph: 1300 765 226 www.acoaus.com.au
DRWG# SCG-DC	With Steel Lid	

The cable enclosure(s) (for a nominal wheel load of 8000kg) with a *clear opening(s)* of shall be **SCEC Pit(s) Type (s)** and *part no.(s)* with SCEC Steel Class D lid(s) *part no.(s)*

All materials and components within the scope of the system shall be obtained from ACO and the work shall be carried out as specified in accordance with the manufacturer installation recommendations.